

Remote Sensing Data User Group



Dr. Sultan Al-Sultan
Director, Gulf Innovation Research Institute
Riyadh, Saudi Arabia
E-mail: rseconsultant@gmail.com



Akira Iwasaki
University of Tokyo

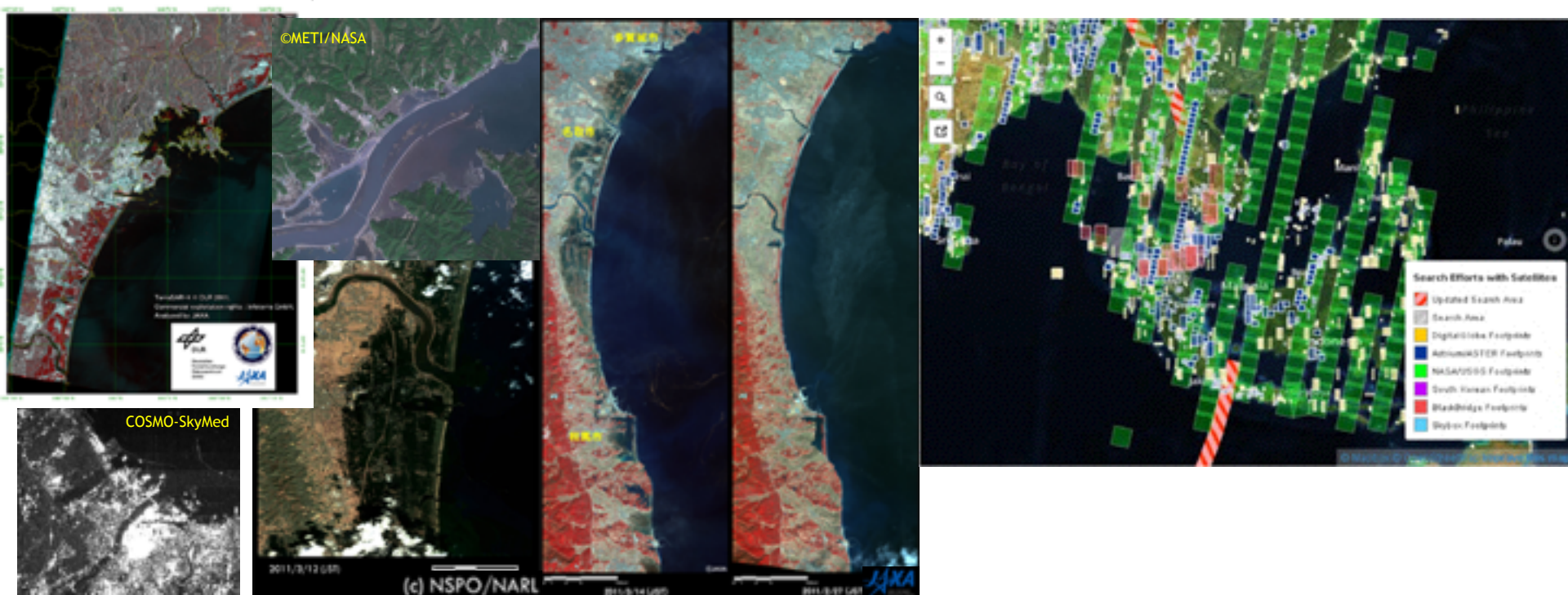
Our Scope

Earth remote sensing is a promising space mission that contributes to monitor disasters, environment and so on. Since most of nano-satellites carry cameras that observe earth images. Increase in nano-satellites during the last decade will enable more frequent earth observation, which has been required many **geo-spatial data** users. However, the characteristics of cameras are quite different among nano-satellites. Furthermore, geometric and radiometric calibrations are needed for data utilization.

The Remote Sensing Data User Group intends to develop the methodology to use cameras on board nano-satellites for remote sensing research. Discussion of **software toolboxes** will be also carried out, which makes a way to expand data utilization of remote sensing data obtained by nano-satellites. To extend our corporation in UNISEC-Global, individual research areas and research themes are discussed.

Disaster & Accident

- About 5,000 scenes of remote sensing data are supplied for 2011 Tohoku Earthquake via the Disaster Charter, which collect the data with “Best effort”.
- Many satellite images are used to find the Malaysian airplane.



Discussion of Software

- Open Source
 - GRASS
- Free Software
 - MultiSpec (Purdue Univ.)
- Commercial Software
 - ENVI-IDL
 - Arc-GIS
 - ERDAS IMAGINE
- Made in UNISEC
 - C and C++
 - Python
 - Matlab

Discussion on Data

National & Commercial Satellites

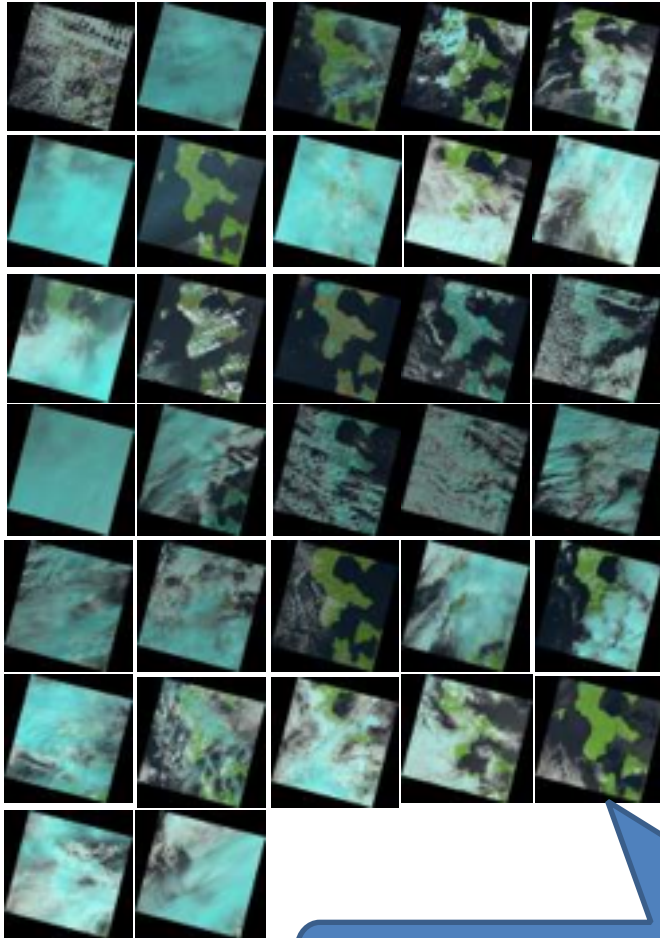
- Open and free data, such as Landsat and Sentinel.
- Any free data will do. We can share the data.
- Ask an educational program with UNISEC for commercial data.

UNISEC Satellites

- Information exchange of UNISEC satellites.
- Do not let the ground station people work so hard to acquire data. “Good effort” will do.

Landsat Data

2013/04/17-2014/10/29 (1.5 years)



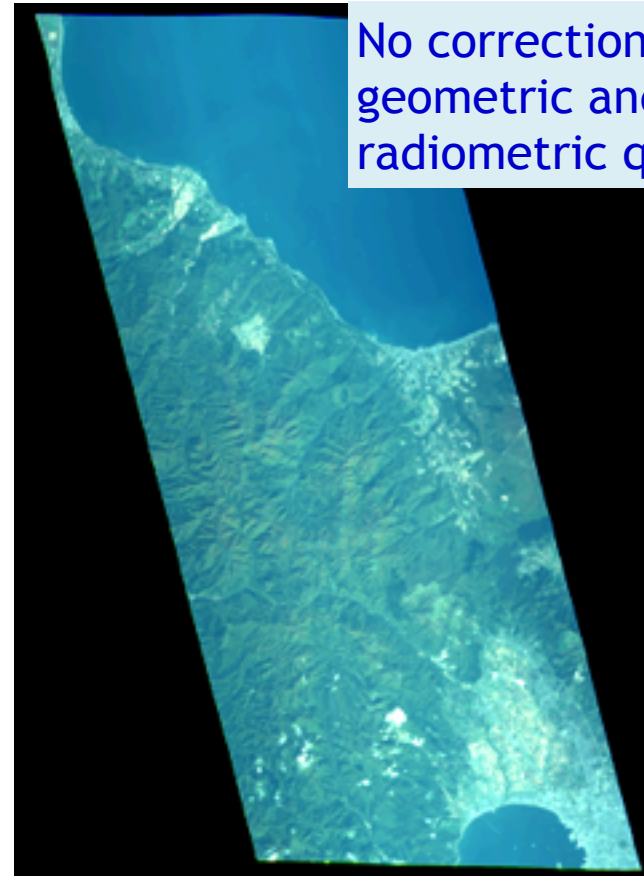
Landsat-8 (USGS)

- Open & Free data
- Ortho-rectified
- Radiometrically calibrated
- Observation every 16 day
- Cloud coverage
- Spatial resolution of 30 m

Northern part of Hokkaido

Small Satellite Data

Landsat 2013/10/10 Hodoyoshi 2014/10/23



No correction in terms of geometric and radiometric quality.

Comparison of Images

Landsat 2013/10/10 Hodoyoshi 2014/10/23



3 km



Co-registered to Landsat image.



Dr. Sultan Al-Sultan

Director, Gulf Innovation Research Institute

Riyadh, Saudi Arabia

E-mail: rseconsultant@gmail.com

